

First Floor

Total Area: 29.6 m² ... 319 ft²

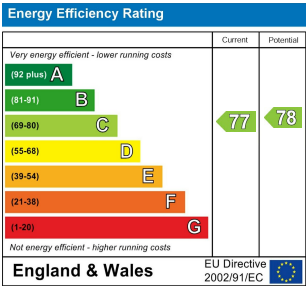
All measurements are approximate and for display purposes only

Shower Room
5'5" x 6'6"

Reception Room
10'6" x 11'10"

Kitchen
6'10" x 6'11"

Bedroom
9'3" x 8'8"



GREENACRE GARDENS, WALTHAMSTOW

£1,300 Per Calendar Month
1 Bed Apartment - Purpose Built



Features:

- SINGLE OCCUPANTS ONLY
- One Bedroom Apartment
- Close to The Station
- Private Parking Available
- Wood Street Location
- Contemporary Bathroom
- Wood Floors Throughout
- Neutral Interior Decor

A freshly refurbished, utterly pristine one bedroom apartment with wood floors, heaps of natural light and designer fixtures and fittings throughout. It's all sat on the first floor of a low rise modern development, just off Wood Street.

One of our most exciting new neighbourhoods, Wood Street is home to an ever evolving range of cafes, shops and restaurants. Wood Street station will get you to Liverpool Street in twenty minutes.

REQUEST A VIEWING
0203 397 9797

E11, E7, E12 & E15
hello11@stowbrothers.com
0203 397 2222

E4 & N17
hello4@stowbrothers.com
0203 369 6444

E17 & E10
hello17@stowbrothers.com
0203 397 9797

E18 & IG8
hello18@stowbrothers.com
0203 369 1818

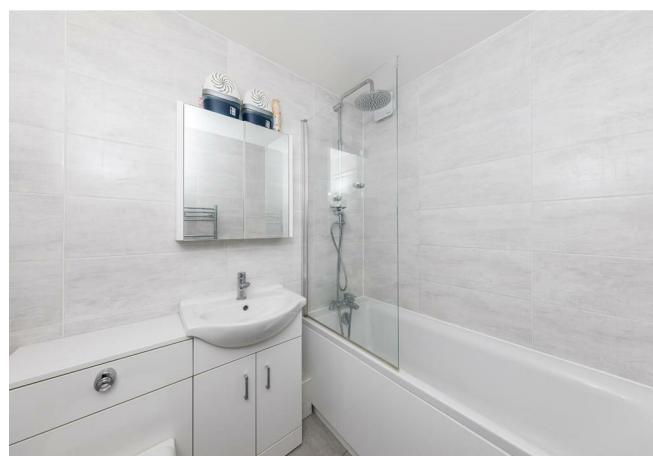
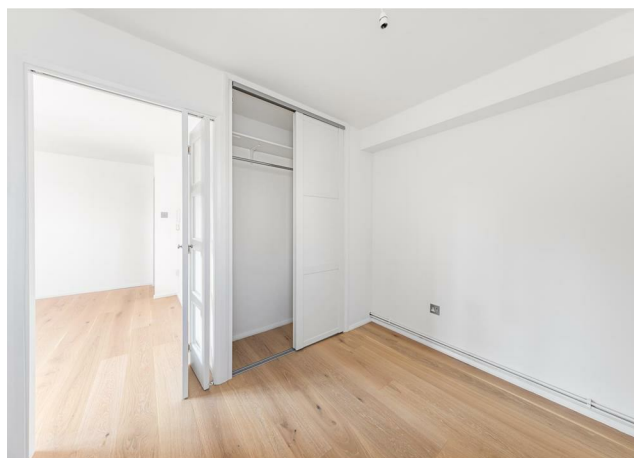
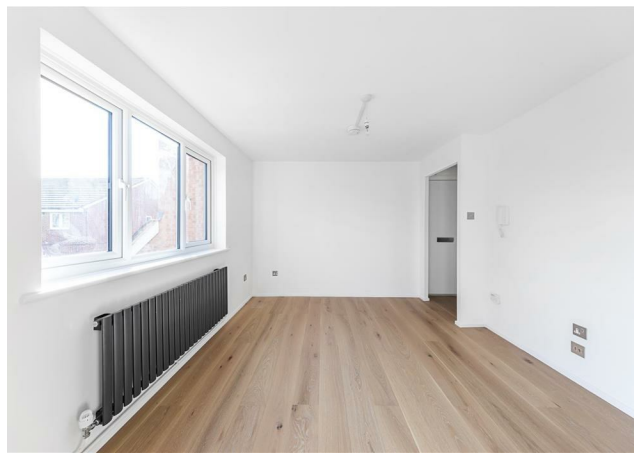
E8, E9, E5, N16, E3 & E2
hellohackney@stowbrothers.com
0208 520 3077

New Homes
newhomes@stowbrothers.com
0203 325 7227

Investment & Development
id@stowbrothers.com
0208 520 6220

Property Maintenance
propertymanagement@stowbrothers.com
0203 325 7228

STOWBROTHERS.COM
@STOWBROTHERS



REQUEST A VIEWING
0203 397 9797

IF YOU LIVED HERE

You'll be enjoying all the benefits of this brand new refurbishment. Your 120 square foot reception features rich hardwood floors, windows framing leafy treetop views and a designer cast iron radiator. It's a pristine spot for hosting. Your bedroom's next door, a solid double finished in a similar style.

Laid open to your reception by an archway, your kitchen's a sleek, contemporary affair with a seamless suite of charcoal cabinets, home to a full range of integrated appliances and topped with white marbled work surfaces. There's plenty of natural light and more treetop views. Your gleaming, boutique bathroom completes the property.

Outside, and as well as Wood Street on your doorstep you're also just a half mile on foot from the enviable environs of Walthamstow Village, for a whole host of diverse, independent

wining and dining establishments . From the Orford Saloon & Deli, to Eat17, The Castle and around a dozen more delightful spots you're sure to find a favourite no matter your tastes.

WHAT ELSE?

- Walthamstow Central is a fifteen minute walk and will get you straight to Kings Cross just as quickly. Plus we're at the top of the Victoria line here so you'll always get a seat.
- Your new development has private parking, and drivers can be on the North Circular in around five minutes. There're also bike hangers for fans of two wheeled travel.
- If it's nature you're craving, then you'll be pleased to know that the tranquil green and blue spaces of Epping Forest and Hollow Ponds are just a half mile on foot.



WHAT ELSE?

- Walthamstow Central is a fifteen minute walk and will get you straight to Kings Cross just as quickly. Plus we're at the top of the Victoria line here so you'll always get a seat.
- Your new development has private parking, and drivers can be on the North Circular in around five minutes. There're also bike hangers for fans of two wheeled travel.
- If it's nature you're craving, then you'll be pleased to know that the tranquil green and blue spaces of Epping Forest and Hollow Ponds are just a half mile on foot.

FOLLOW US ➡ @STOWBROTHERS
STOWBROTHERS.COM